

# TEQSPORT 86 STAINLESS BRAKE LINES INSTALLATION MANUAL



This Installation Manual is intended for the following models:	
2013+	Subaru BRZ
2017+	Toyota 86
2013-2016	Scion FRS

**PROLOGUE:**

Study these instructions completely before proceeding to assembly. The installer must have a thorough knowledge of automotive systems operation. If unfamiliar with any of the concepts outlined in this instruction, we recommend the installation be completed by a qualified professional.

**WARNING!**

Extreme caution should be taken when performing maintenance or performance upgrades to your vehicle. Please observe and abide by any Warning or Caution labels placed on the various components and tools used when servicing your vehicle. If you have any questions regarding installation or the various components included with the TEQSPORT 86 Stainless Brake Lines, consult with a Professional Mechanic, or contact TEQSPORT for more information.

## PARTS INCLUDED:

Item	Quantity	Description
1	2	Front Brake Line
2	2	Rear Brake Line
3	4	Banjo Bolt
4	8	Crush Washer
5	4	Retaining Clip
Optional:		
6	1	Brake Fluid

## TOOLS REQUIRED:

- Hydraulic Jack
- (2) 2-Ton (or greater) Jack Stands
- Ratchet
- Ratchet Extension(s)
- Assorted Metric Wrenches
- Assorted Metric Sockets
- Torque Wrench
- Channel Lock Pliers
- Flared Wrenches

## SAFETY REQUIREMENTS:

- Always wear safety glasses and any necessary protective garments. If using any fluids, chemicals, or solvents, a respirator is recommended.
- Always turn the ignition to the OFF position and disconnect the NEGATIVE battery terminal.
- Always use properly rated jack stands when working under your vehicle.
- Always keep limbs and parts away from moving drivetrain parts.
- Only operate drivetrain in a safe space and well-ventilated areas.

## BEFORE YOU BEGIN:

Remove contents from the TEQSPORT 86 Stainless Brake Lines and verify that ALL necessary hardware is present.

The process for vehicles equipped with the Brembo Brakes is the same as Base Brakes, it will just look slightly different. Brembo equipped vehicles also have (2) two Bleeders per Caliper. The Inboard Bleeder should be bled before the Outboard Bleeder.

Use of a Flared Wrench on the OE Brake Line is HIGHLY recommended. Not using a Flared Wrench can lead to rounding off the OE Nut and making the installation more difficult.

## PROCEDURE:

1. Place the transmission in Park position (or in Reverse gear if equipped with a manual transmission). Apply the parking brake.
2. Loosen the lug nuts on all (4) four wheels.
3. Locate the proper jacking points on the **vehicle's chassis (refer to the Vehicle's Owner's Manual)**. Raise and support the vehicle using a jack and jack stands.
4. Remove the wheels and lug nuts from the vehicle.

## FRONT BRAKE LINES:

1. Remove the Retaining Clip securing the OE Soft Line to the OE Hardline Bracket. *Figure 1.*



Figure 1

2. Unbolt the clip on the OE Soft Line. Retain this bolt as it will be reused. *Figure 2.*



*Figure 2*

3. Disconnect the OE Soft Line from the Hard Line. It is recommended to use a Flared Wrench to prevent the nut from rounding. Prepare a rag or bucket to collect Brake Fluid as it will spill once the Line is disconnected.

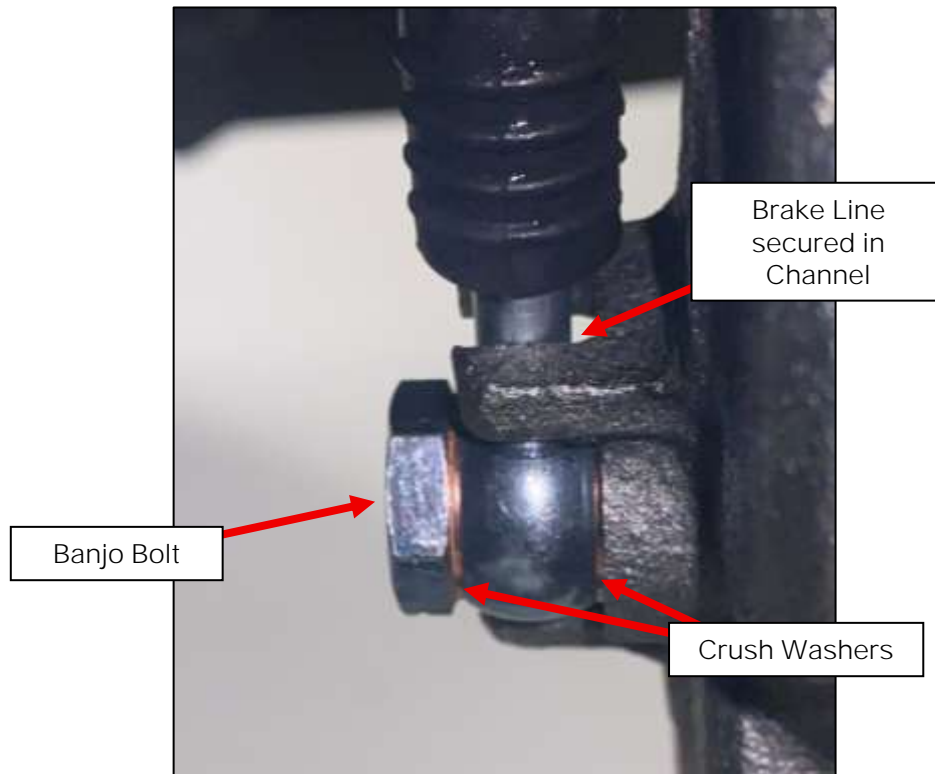
NOTE: Clean up any spilled Brake Fluid immediately. Brake Fluid will damage painted surfaces.

4. Remove the OE Banjo Bolt from the Brake Line to the Caliper and fully remove the Brake Line from the vehicle. *Figure 3.*



*Figure 3*

5. Locate (1) one Front Brake Line, (1) one Banjo Bolt and (2) two Crush Washers. Place a Crush Washer onto the Banjo Bolt then place the Banjo Bolt through the Banjo Fitting of the Brake Line. Place the second Crush Washer onto the other side of the Banjo Bolt and thread it into the Brake Caliper. Make sure the Banjo Fitting is sitting in the channels of the Caliper. Torque the Banjo Bolt to 14 ft-lbs. *Figure 4*.



*Figure 4*

6. Thread the other end of the Stainless Brake Line to the OE Hard Line. Secure this connection to the Bracket with (1) one Retaining Clip. *Figure 5*.



*Figure 5*

7. Join the Brake Line Clip to the OE Bracket with the OE Bolt removed in *Step 2. Figure 6.*

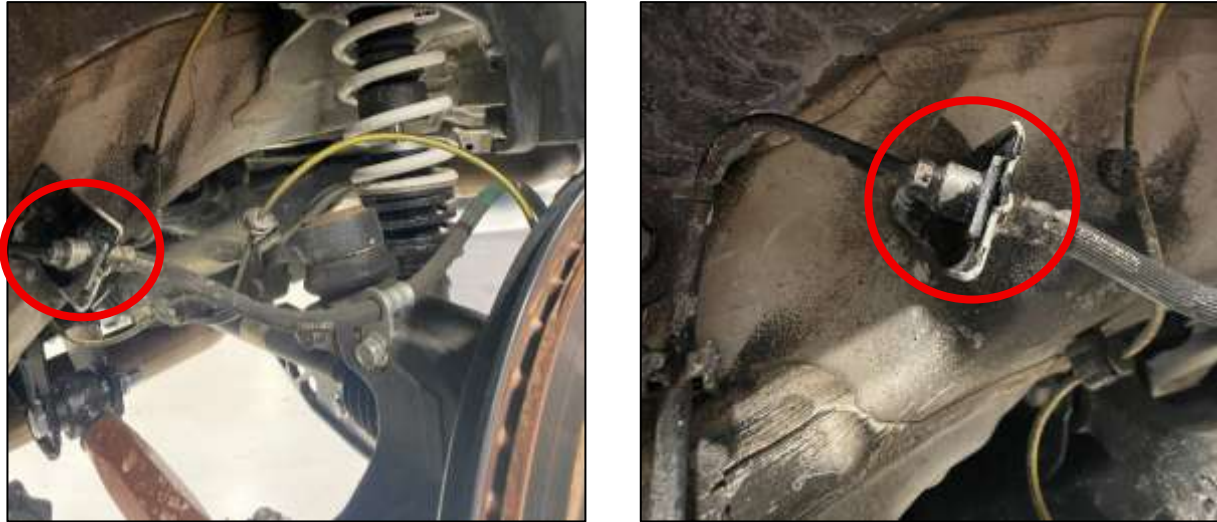


*Figure 6*

8. Repeat *Steps 1-7* for the other side of the vehicle.
9. Bleed the Brake System in accordance with the Factory Service Manual. Wait to Bleed the brakes until after the Rear Brake Lines have been changed as well. Brembo equipped vehicles have (2) two Bleeders per Caliper. The Inboard Bleeder should be bled before the Outboard Bleeder.

## REAR BRAKE LINES:

1. Remove the Retaining Clip securing the OE Soft Line to the Hard Line Bracket. *Figure 7.*



*Figure 7*

2. Unbolt the clip from the OE Soft Line to the Knuckle. Retain this bolt as it will be reused. *Figure 8.*



*Figure 8*

3. Disconnect the OE Soft Line from the Hard Line. It is recommended to use a Flared Wrench to prevent the nut from rounding. Prepare a rag or bucket to collect Brake Fluid as it will spill once the Line is disconnected.

NOTE: Clean up any spilled Brake Fluid immediately. Brake Fluid will damage painted surfaces.

4. Remove the OE Banjo Bolt from the Brake Line to the Caliper and fully remove the Brake Line from the vehicle. *Figure 9.*



*Figure 9*

5. Locate (1) one Rear Brake Line, (1) one Banjo Bolt and (2) two Crush Washers. Place a Crush Washer onto the Banjo Bolt then place the Banjo Bolt through the Banjo Fitting of the Brake Line. Place the second Crush Washer onto the other side of the Banjo Bolt and thread it into the Brake Caliper. The curve of the Brake Line should point downwards when joined to the Caliper. Brembo Calipers have a Channel for the Brake Line to sit in. Torque the Banjo Bolt to 14 ft-lbs. *Figure 10*.

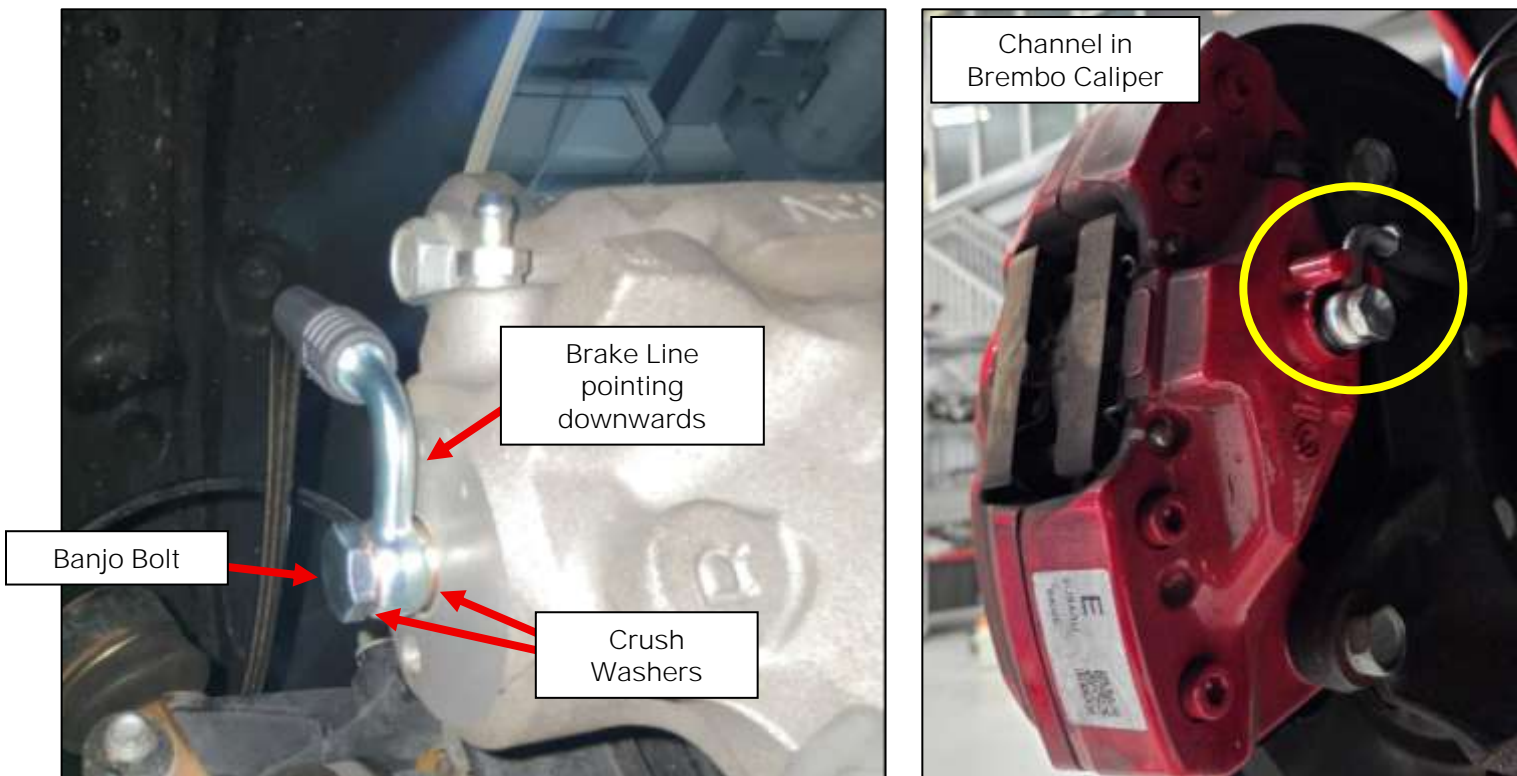


Figure 10

6. Thread the other end of the Stainless Brake Line to the OE Hard Line. Secure this connection to the Bracket with (1) one Retaining Clip. *Figure 11*.



Figure 11

7. Join the Brake Line Clip to the OE Bracket with the OE Bolt removed in *Step 2. Figure 12.*



*Figure 12*

8. Repeat *Steps 1-7* for the other side of the vehicle. *Figure 13.*



*Figure 13*

9. Bleed the Brake System in accordance with the Factory Service Manual. Wait to bleed the Brakes until after the Front Brake Lines are installed as well. Brembo equipped vehicles have (2) two Bleeders per Caliper. The Inboard Bleeder should be bled before the Outboard Bleeder.

END

Additional Technical Support:  
Contact TEQSPORT at [info@tegsport.com](mailto:info@tegsport.com)  
Or call 770-832-7184 between 9am and 6pm ET